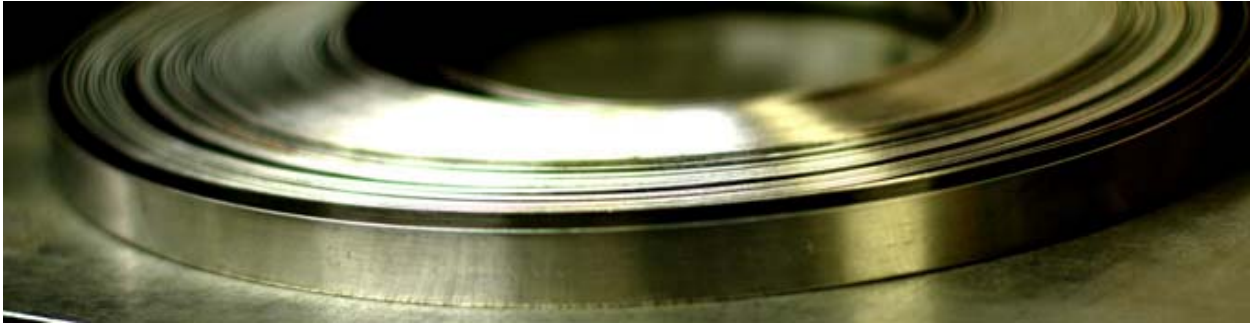




Stainless Steel Strapping, Buckles & Tools Booklet

(catalogue pages 26-28)

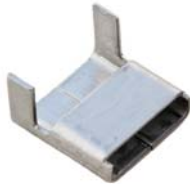


Sign & Post Hardware section contains:

- Sign Brackets Booklet
- **Stainless Steel Strapping, Buckles & Tools Booklet ←**
- Sign Post Accessories Booklet



BA206-BLK
Now in stock!



ISO™ Strapping Type 201 stainless steel				
Part No:	Width	Gauge	Coil Length	Color
BA204	1/2"	0.030"	100'	-
BA205	5/8"	0.030"	100'	-
BA206	3/4"	0.030"	100'	-
BA206-BLK	3/4"	0.030"	100'	Black
LG181	1/2"	0.020"	100'	-
LG171	5/8"	0.020"	100'	-
LG161	3/4"	0.020"	100'	-

To be used with ISO™ buckles

ISO™ Buckles Type 200/300 stainless steel	
Part No:	Width
BU254	1/2"
BU255	5/8"
BU256	3/4"

To be used with ISO™ strapping

ISO™ Wing Seals Type 200/300 stainless steel	
Part No:	Width
WS154	1/2"
WS155	5/8"
WS156	3/4"

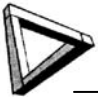
To be used with ISO™ strapping

Band-It™ Strapping Type 201 stainless steel			
Part No:	Width	Gauge	Coil Length
C204	1/2"	0.030"	100'
C205	5/8"	0.030"	100'
C206	3/4"	0.030"	100'

To be used with Band-It™ buckles

Band-It™ Buckles Type 200/300 stainless steel	
Part No:	Width
C254	1/2"
C255	5/8"
C256	3/4"

To be used with Band-It™ strapping



Pre-fabricated Bucklestraps

Our machine shop is capable of manufacturing pre-fabricated strapping hardware using standard stainless steel strapping cut to length with a tapered end on one side and a permanently attached buckle on the other.

This allows for quick and easy installation, saving approximately 3 minutes per sign, and reduces the number of tools brought to a job site.

We have added a feature to our cutting tools which taper the ends of the strapping in order to protect the installer from any sharp or jagged edges caused by cutting the strapping with basic shears. The tapering also allows for easier entry into the bracket and the buckle when fastening.

Bucklestraps ISO™ Strapping - Type 201 stainless steel			
Part No:	Width	Gauge	Finished Length
BA204-BU-##*	1/2"	0.030"	Any
BA205-BU-##*	5/8"	0.030"	Any
BA206-BU-##*	3/4"	0.030"	Any
LG181-BU-##*	1/2"	0.020"	Any
LG171-BU-##*	5/8"	0.020"	Any
LG181-BU-##*	3/4"	0.020"	Any

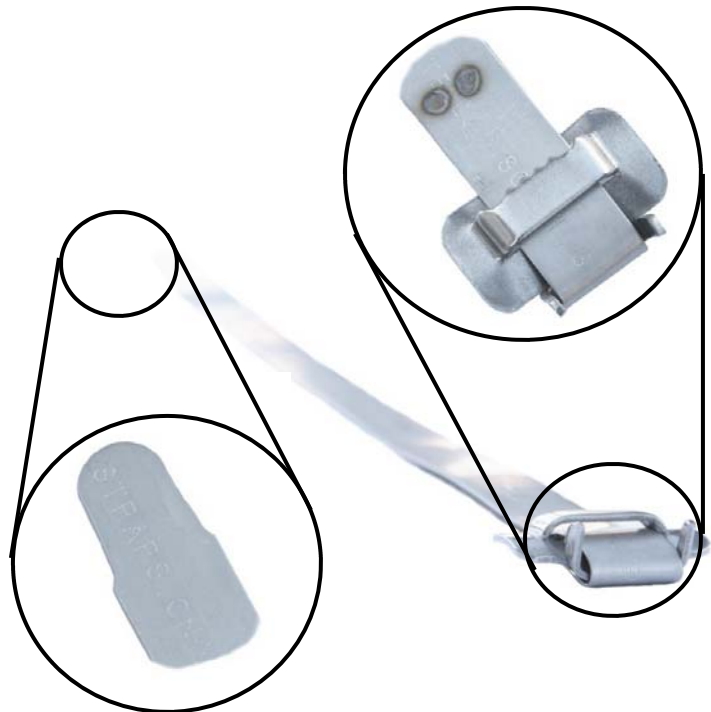
Set-up fee and 300' total finished minimum length will apply
*## denotes the finished length in inches - specified by customer

Bucklestraps ISO™ Strapping - Type 201 stainless steel			
Part No:	Width	Gauge	Finished Length
BA204-BU-34	1/2"	0.030"	34"
BA205-BU-34	5/8"	0.030"	34"

In stock
No set-up fee and only standard minimum order amounts will apply

Bucklestraps Band-It™ Strapping - Type 201 stainless steel			
Part No:	Width	Gauge	Finished Length
C204-BU-##*	1/2"	0.030"	Any
C205-BU-##*	5/8"	0.030"	Any
C206-BU-##*	3/4"	0.030"	Any

Set-up fee and 300' total finished minimum length will apply
*## denotes the finished length in inches - specified by customer





Spin Handle Tensioning Tools					
<u>Part No:</u>	<u>Brand</u>	<u>Minimum Width</u>	<u>Maximum Width</u>	<u>Maximum Gauge</u>	<u>Tensioning Force</u>
T-001	Standard	3/16"	3/4"	0.030"	2400 LBS
C-001	Band-It™	3/16"	3/4"	0.030"	2400 LBS
Strap Tensioning Tool					



Ratchet Handle Tensioning Tools				
<u>Part No:</u>	<u>Brand</u>	<u>Minimum Width</u>	<u>Maximum Width</u>	<u>Maximum Gauge</u>
T-101	Standard	3/8"	3/4"	0.030"
Strap Tensioning Tool Recommended For Tensioning On Flat Surfaces				